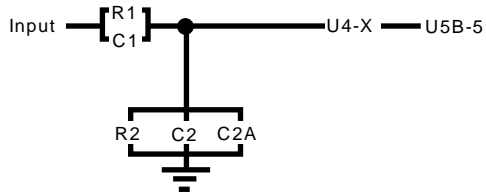
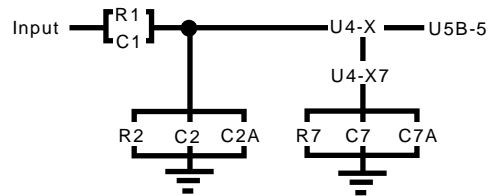


DSO Nano V1.3A Front End Circuitry

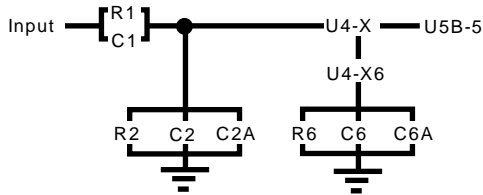
1x@ 10mV, 20mV, 50mV, 100mV



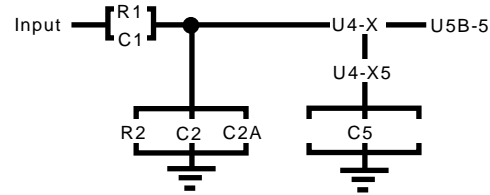
1x@ 200mV, 500mV, 1000mV



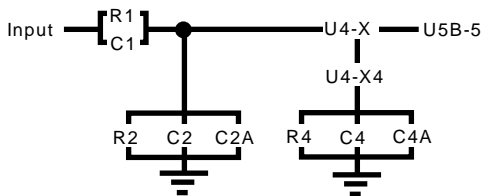
1x@ 2V, 5V, 10V



10x@ 200mV, 500mV, 1000mV



10x@ 2V, 5V, 10V



10x@ 20V, 50V, 100V

