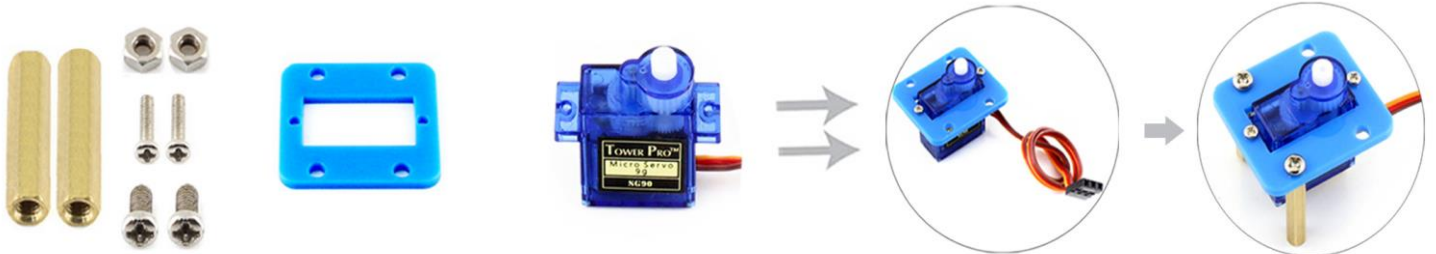


Part 2 : Ultrasonic Unit Assembly



④ Fix the steering gear board onto the SG90 steering gear with **(I)** and **(J)**, and install **(L)** and **(B)** onto the two holes in the front of the steering gear.



Fix the two-way rocker arm to the Pinboard with **(E)**, and then install the Pinboard to the SG90 steering gear and use the screw **(1.)** to fix it. Finally, insert the ultrasonic sensor to the Pinboard.

